



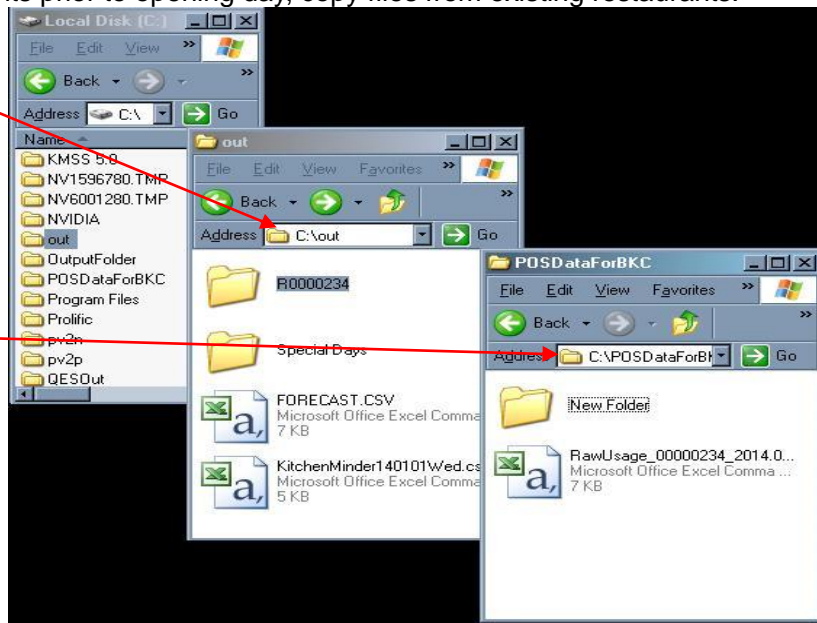
PCMinder™ & Kitchen Minder 2™ Installation Guide

The following Document is a step by step Guide to Installing and using PCMinder Software.

1. For setting up new restaurants prior to opening day, copy files from existing restaurants.

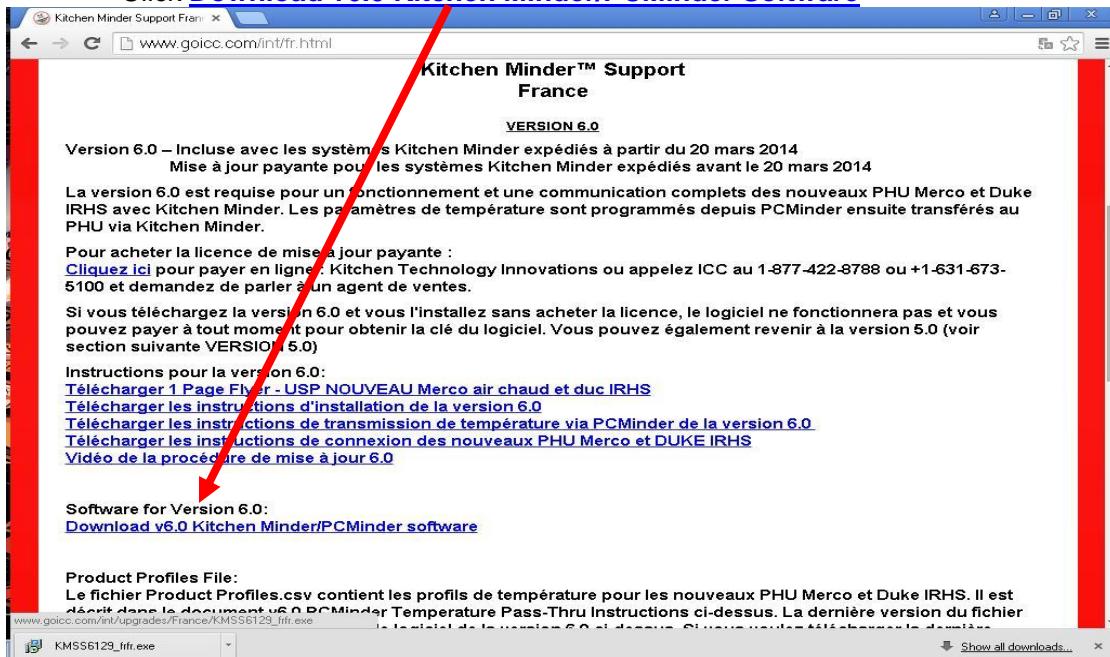
a) C:\out (Copy files
from Folder)

b) C:\POSDataforBKC
(Paste files to this Folder)



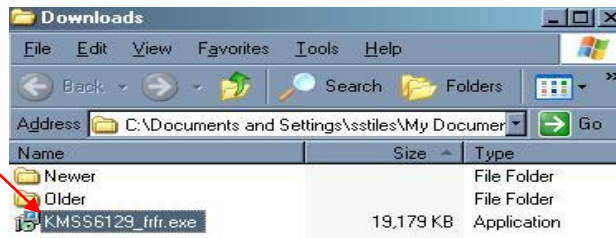
2. Download latest 6.0 KMSS Package from France support page <http://goicc.com/int/fr.html>

Click [Download v6.0 Kitchen Minder/PCMinder Software](#)



3. Run KMSS install Package

KMSS6129_frfr.exe



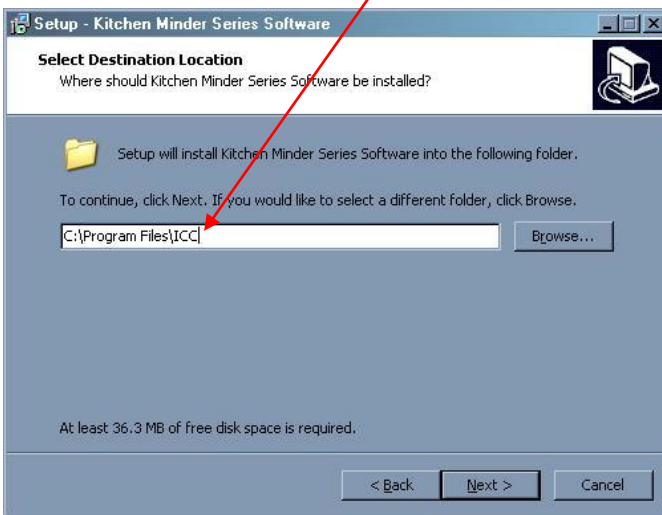
a) Run Installation



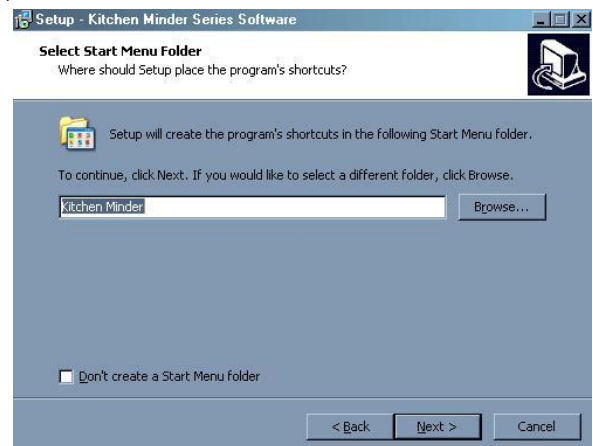
b) Click Next



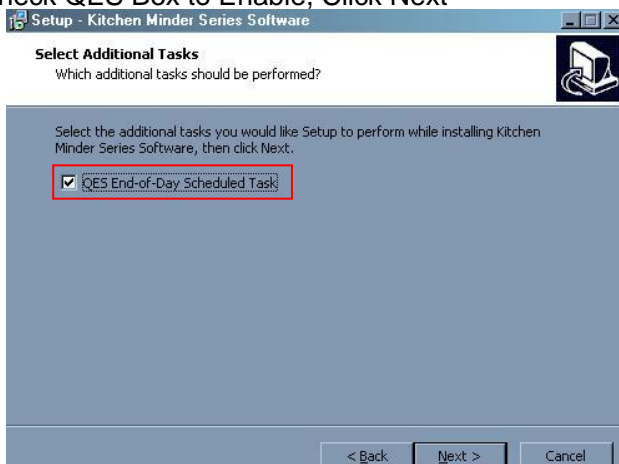
c) Make sure File Path is Correct



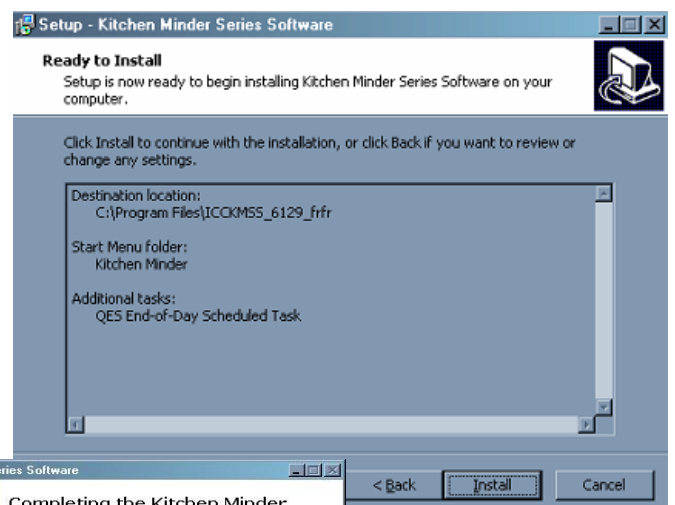
d) Click Next



e) Check QES Box to Enable, Click Next



f) Click Install



After the Install Completes, then Click finish.

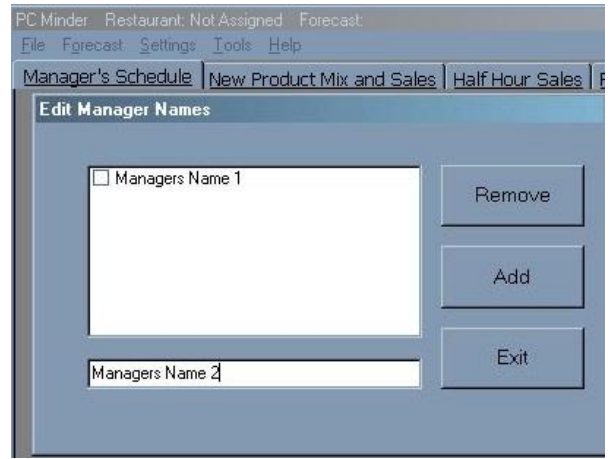


4. Run PCMinder

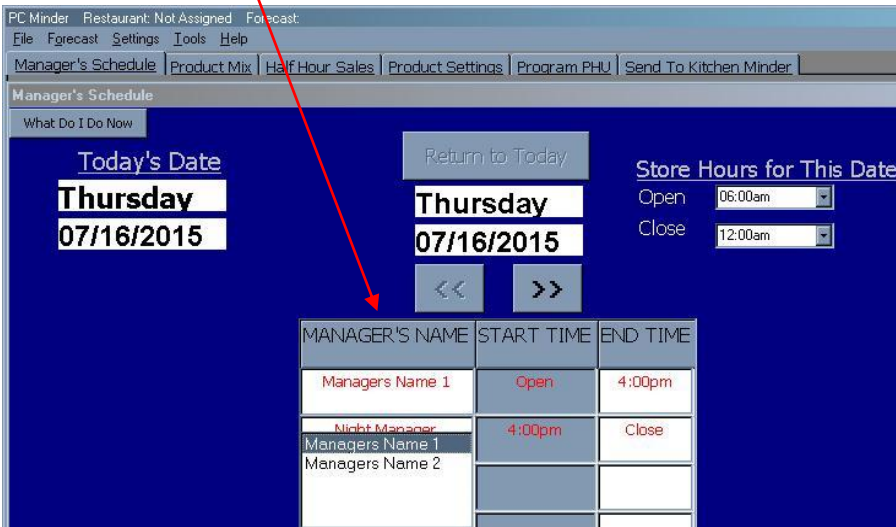


a) Enter at least 1 Manager Name.

You cannot continue without a Managers Name.

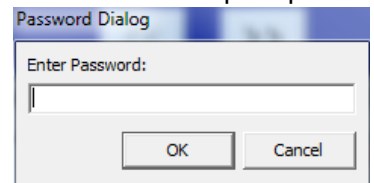


b) Assign Open/Close Manager (Click to Set Managers Names and Store Hours)



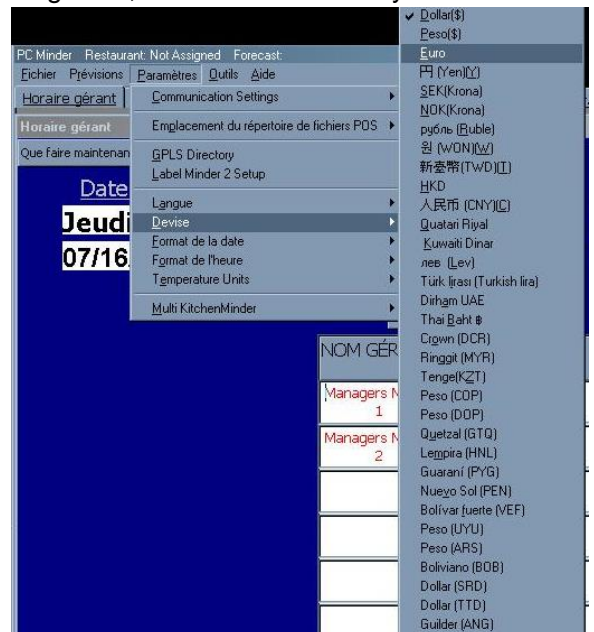
5. Change Language to French

Click the Settings Tab, then Select Language to Choose French. (Enter the Password "admin" when prompted.)



6. Change the Currency to EURO

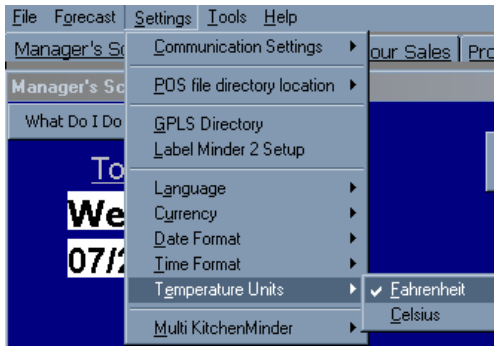
Click the Settings Tab, then Select Currency to Choose Euro



7. Changing Temperature-

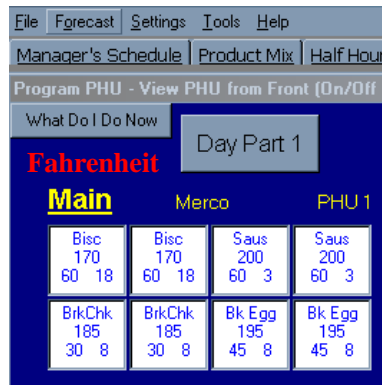
Click the Settings Tab, and then select the Temperature Units

From there you can select either Fahrenheit or Celsius.

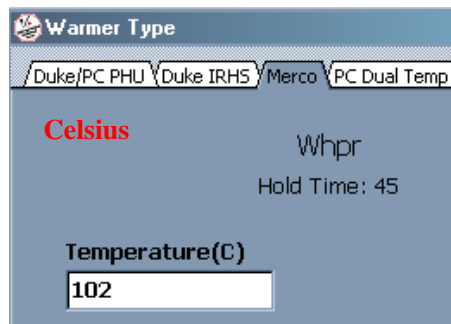
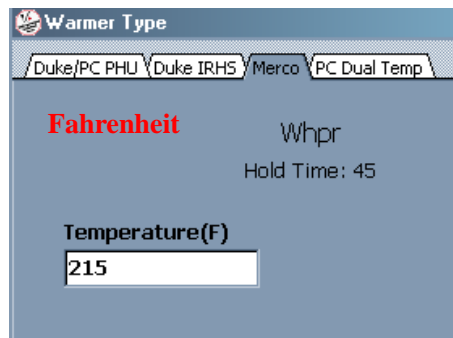
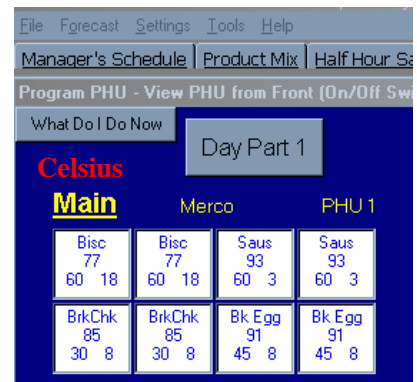


The Temperature Conversions are Completely Accurate.

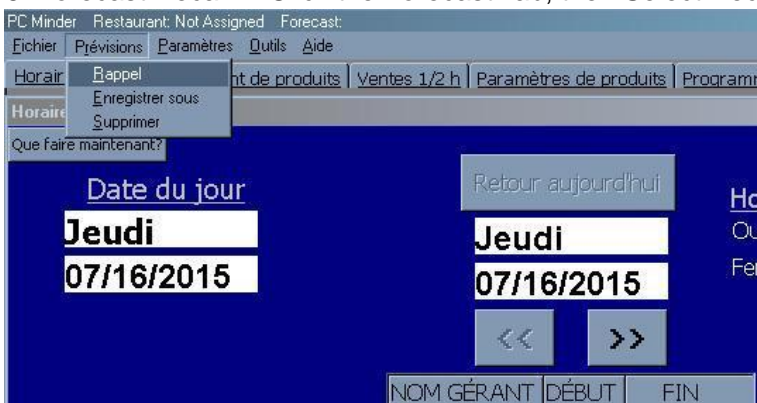
Note: You must Switch back and forth through screens for the Temperature change to see the Temperature units Change.



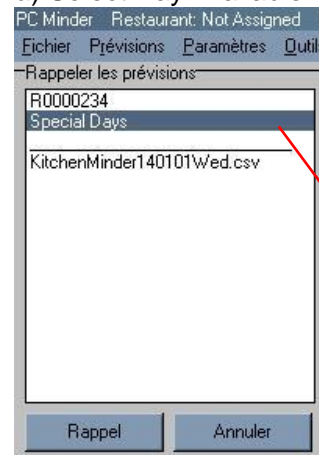
Temperature Conversion from Fahrenheit to Celsius.



8. Forecast Recall- Click the Forecast Tab, then Select Recall.

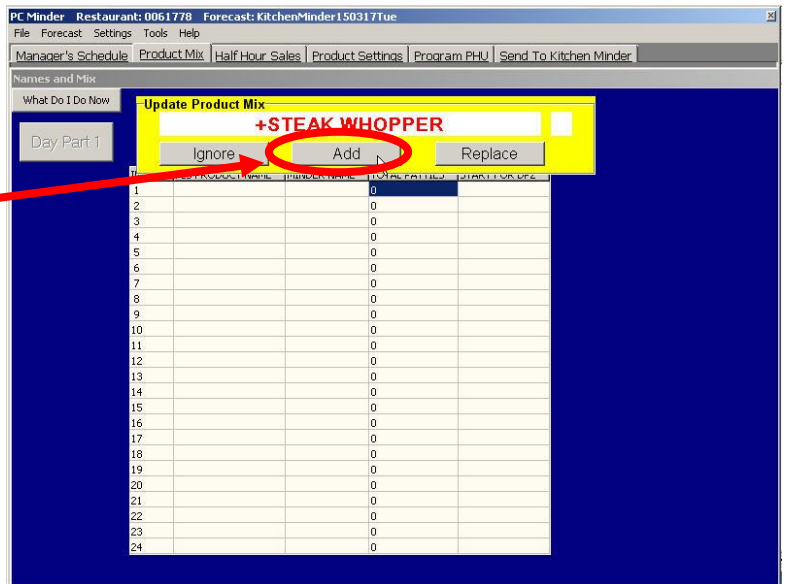


a) Select Day Available

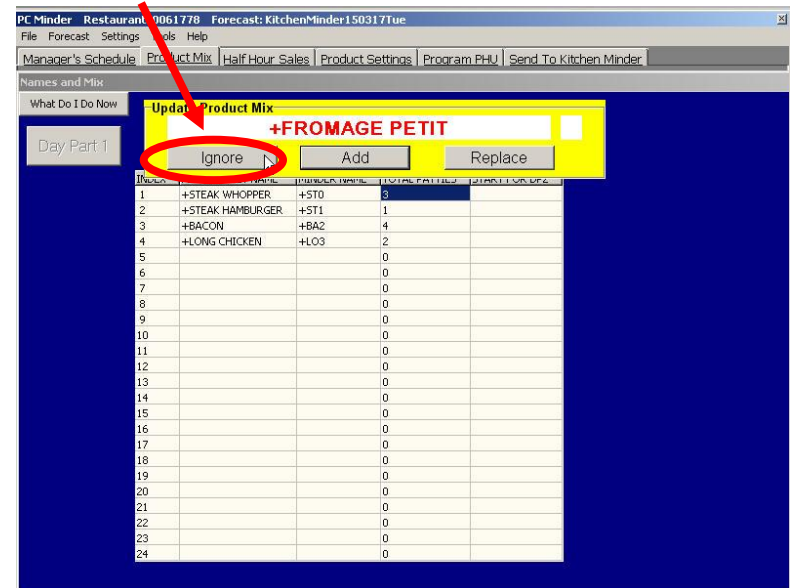


9. Daypart 1 and Daypart 2 Product Mix SetUp

a) For all Products to HOLD in the PHU's, Click the ADD button. The Kitchen Minder will call for these products to cook.

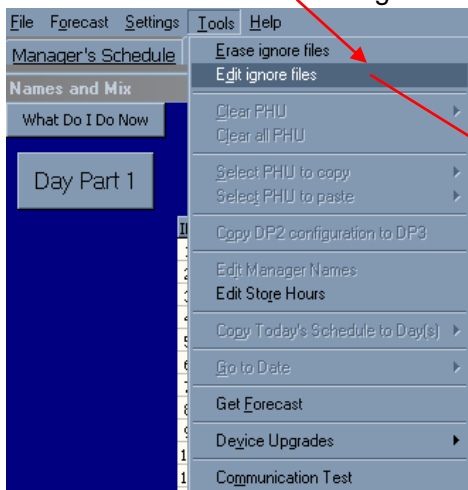


b) For all other Products NOT to HOLD in the PHU's, Click the IGNORE button. The Kitchen Minder will NOT call for these products to cook.

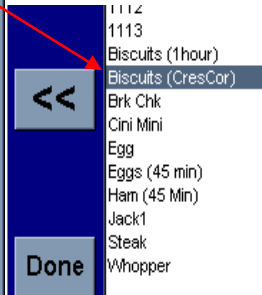


c) If you Ignored a certain product that is needed for a particular Daypart, you can edit the Ignore files and add the Item that you missed.

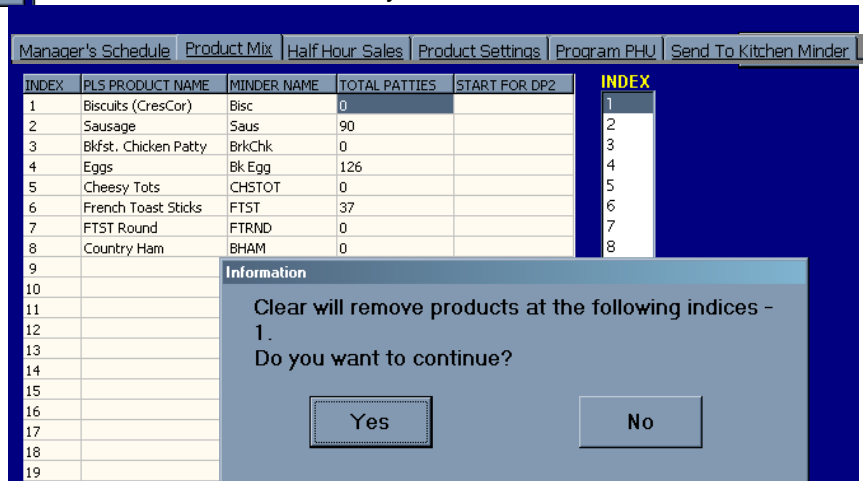
Click Tools then select Edit Ignore Files



Then Select the Product you wish to add
click the Double arrows
to add the Product, then click done



d) If you need to clear a product from a particular Daypart. Go to the Product Mix Tab & Click the Clear Button. Then select which product you'd like to clear from the Index number listed on the right. Then Click the clear button again to remove that Product. Then Click yes.



10. In the Product Mix Tab, Make sure to have the Correct Minder Name for the Matching Product. (Click to Edit)

Répertoire	NOM PRODUIT SNS	NOM MINDER	TOTAL GALETTES
1	WHOPPER Patties	Whpr	264
2	Burger Patties	Burger	452
3	WHOPPER Buns	BunWh	206
4	Burger Buns	BunB	356
5	Sourdough Buns	Buns	0
6	Sourdough Jr Buns	BunJr	0
7	Corn Dusted Buns		107
8	Mozzarella Sticks	MOZZ	0
9	Salad Chicken (Cold Procedures)		3
10	Chicken Patties	Or Chk	55
11	FISH Patties	Fish	26
12	BK VEGGIE	Veggie	3
13	CHICKEN TENDERS	Tender	340
14	Tacos (each)	Taco	0
15	TenderCrisp Patties	TCrisp	37
16	TENDERGRILL Patty	Tgrill	13
17	CHICKEN FRIES (Rm.Temp)	ChkFry	318
18	The Angus Steak Patty	Angus	31

11. In the Product Settings Tab.

a) Choose the Warmer Type (Double Click to Select Warmer)

b) Load Profile

Broiled- 165F (74c)

Fried A- 200f (93c)

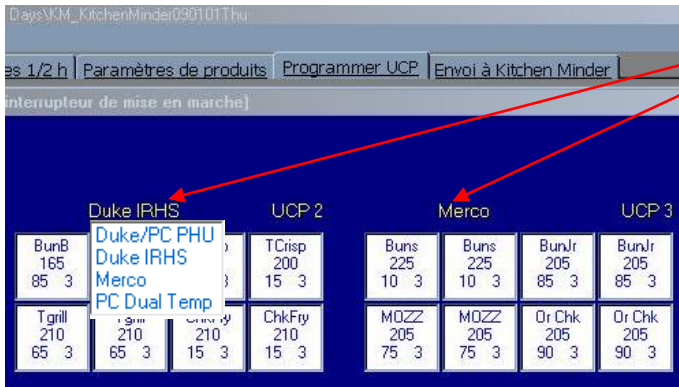
Fried B- 210f (99c)

Product Profile **Hold Times**

c) Enter Max/Pan for each item and check hold time & cook time.

MINDER NAM	WARMER TY	PATTIES/	MAX/PAN	MIN/PAN	HOLD TIME	COOK TIME	PANS PGMEI	Peak Pans
Whpr	Duke IRHS	49	9	0	5	3	0	2
Burger	Duke IRHS	84	12	0	50	3	0	5
BunWh	Duke IRHS	38	7	0	45	3	0	3
BunB	Duke IRHS	66	8	0	85	3	0	9
Buns	Merco	0	9	0	10	3	0	2
BunJr	Merco	0	12	0	85	3	0	2
	Duke/PC PHL	20	0	0	0	0	0	0
MOZZ	Merco	0	20	0	75	3	0	2
	Duke/PC PHL	1	10	0	60	8	0	2
Or Chk	Merco	10	6	0	90	3	0	2
Fish	Merco	5	6	0	65	3	0	2
Veggie	Merco	1	6	0	80	3	0	2
Tender	Merco	63	24	0	75	3	0	3
Taco	Merco	0	8	0	15	3	0	2
TCrisp	Duke IRHS	7	3	0	15	3	0	2
Tgrill	Duke IRHS	2	8	0	65	3	0	2
ChkFry	Duke IRHS	59	36	0	15	3	0	2
Angus	Duke IRHS	6	6	0	85	3	0	2

12. Program PHU Tab

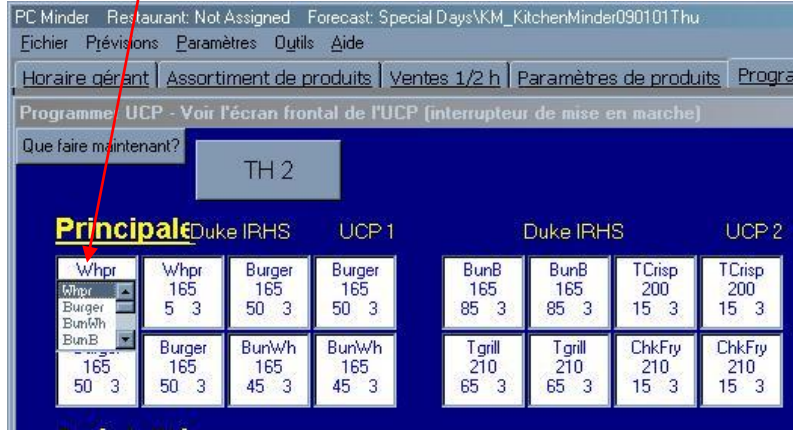


a) Correct PHU Type (in Yellow)

Click to select correct Warmer Type
Otherwise, no Products will be shown.

NOTE: You can have different Warmer Types and Products on other PHUs.

b) Assign Products in each pan.



13. Save your Changes

Click File, then save.



14. Change KM to Multi KM

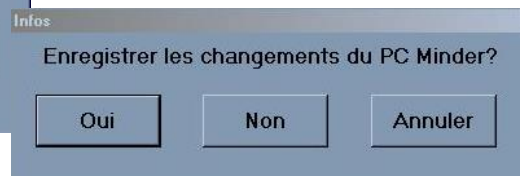
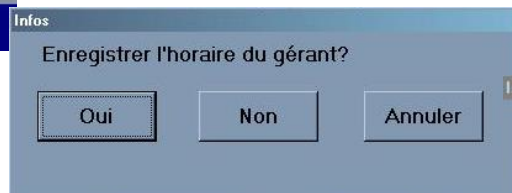
Click the Settings Tab, then Select Multi Kitchen Minder to Enable or Disable.



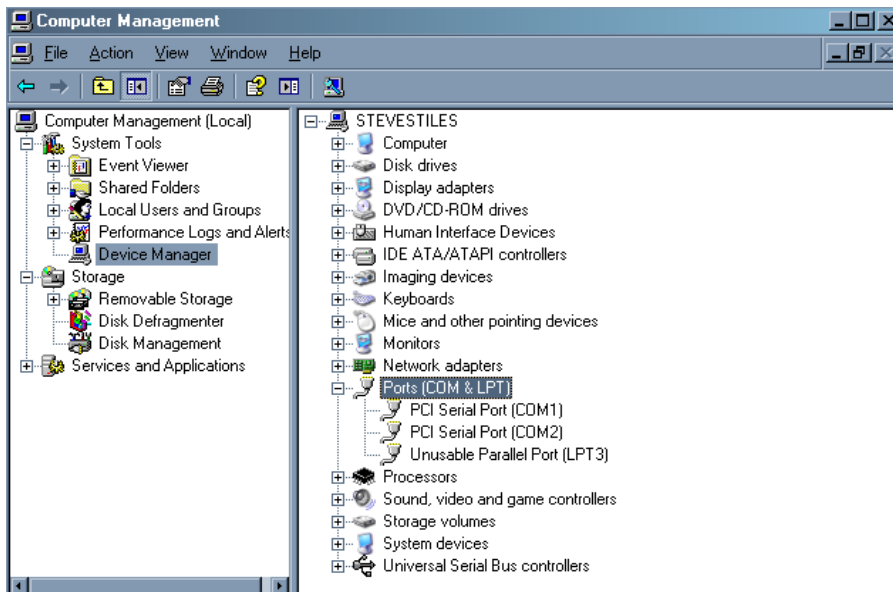
(In order for Changes to take effect you must exit out of PC Minder and Save your Settings, then re-enter PC Minder.)

15. If USB-Serial adapters are installed

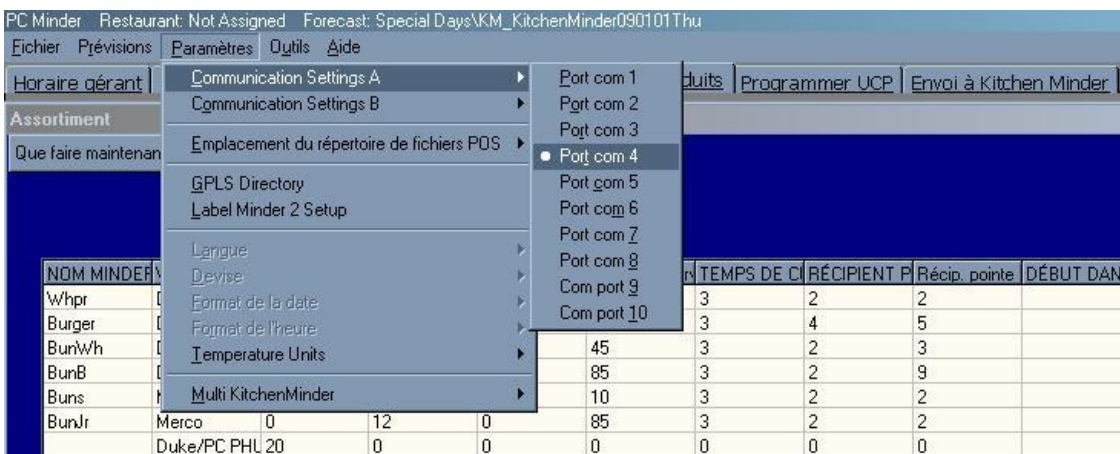
a) Exit PC Minder, Click Save, Yes, the Yes.



b) Check Windows COM Ports in Device Manager.
 Right Click My Computer, Select Manage, then Device Manager.
 Then Select Ports to see what they are set to.



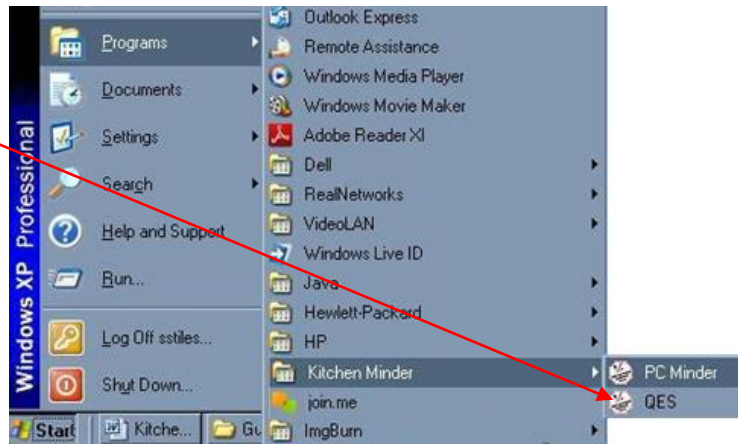
c) Re-enter PCMinder and Assign Com Ports in PCMinder



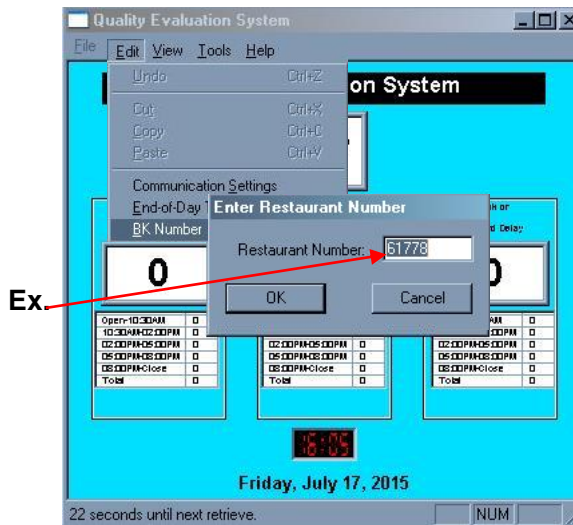
16. Proceed to Send a Forecast to the Kitchen Minders that you set to the Assigned Com Ports.



17. Assigning a BK# to PCMinder.
 Open up QES from the Start Menu.



a) Then Enter the BK#



b) When you Re-enter
 PCMinder, The Restaurant #
 Should be Listed on Top of the PCMinder Application.

